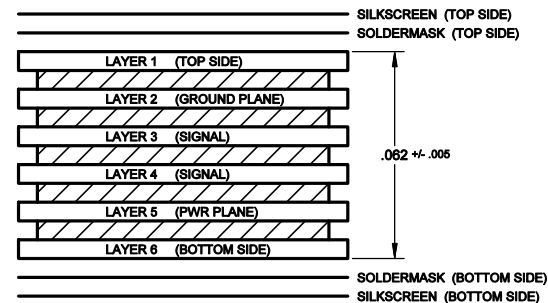


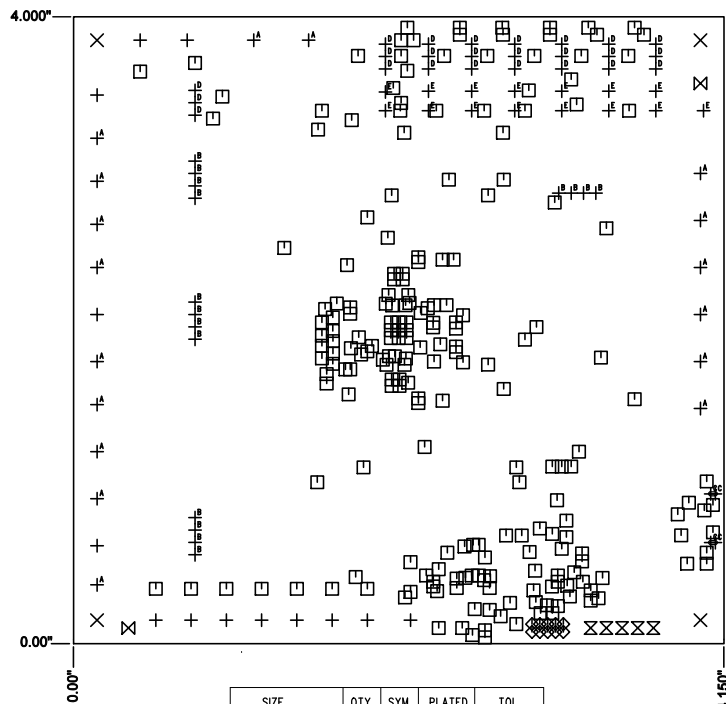
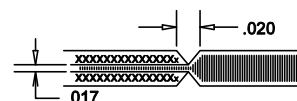
REVISION HISTORY				
ECO	REV	DESCRIPTION	APP. ENG.	DATE
-	03	PRODUCTION	WL	12-19-19

LAYER STRUCTURE 6 LAYER



NOTES: UNLESS OTHERWISE SPECIFIED

- FABRICATION:** FABRICATION AND ACCEPTANCE TO MEET THE REQUIREMENTS OF IPC-A-600 AND IPC/ANSI-MLL950-C CLASS 2, AOL .25 GENERAL INSPECTION LEVEL II.
- MATERIAL:** - EPOXY FIBERGLASS, NEMA GRADE FR-4
- FINISHED THICKNESS TO BE 0.062" +/- .005"
- TOTAL OF 6 LAYERS WITH 2 OZ. CU ON THE OUTER LAYERS AND 1 OZ. CU ON THE INNER LAYERS.
- FLAMMABILITY RATING: 94 V-0 MINIMUM.
- SIZE:** CUT TO DIMENSIONS AND TOLERANCES SHOWN 0.00" ARE PRIMARY DATUMS.
- DRILLING:** - DRILL HOLES PER SCHEDULE. PLATE THROUGH HOLES WITH COPPER, 0.001" THICK MIN.
- ALL HOLE SIZES ARE SPECIFIED AFTER PLATING.
- HOLE LOCATION TOLERANCES ARE +/-0.003" IN RELATION TO CENTER.
- FINISH:** - SMOBC USING LPI BOTH SIDES, COLOR GREEN. TENT BOTH SIDES.
- GOLD IMMERSION BOTH SIDES.
- FOR SILKSCREEN: BOTH SIDES USE WHITE NON-CONDUCTIVE INK.
- DO NOT ALTER ARTWORK** e.g. TO ADD LOGO OR DATE CODE.
PAD SIZE CAN BE MODIFIED TO MEET END FINISH.
- PCBS ARE TO BE RoHS COMPLIANT.
- SCORING FOR PANELIZED PCB:



SIZE	QTY	SYM	PLATED	TOL
0.012	218	□	YES	+/-0.003
0.02559 x 0.05512	2	⊕	YES	+/-0.003"
0.02756	10	◇	YES	+/-0.003"
0.032	16	⊕	YES	+/-0.003"
0.033	15	⊕	YES	+/-0.003"
0.04	24	⊕	YES	+/-0.003
0.042	5	⊗	YES	+/-0.003"
0.065	13	+	YES	+/-0.003"
0.07	2	⊗	NO	+/-0.003"
0.094	17	⊕	YES	+/-0.003"
0.188	4	⊗	YES	+/-0.003"

ADDITIONAL REQUIREMENT FOR PROTOTYPE FAB ONLY:

- OUTGOING INSPECTION REPORT (BASED ON ACTUAL MEASUREMENTS AND CROSS SECTION).

ADDITIONAL REQUIREMENTS FOR PRODUCTION FAB ONLY:

- PROVIDE COMPLIANCE CERTIFICATES FOR RoHS, REACH AND CONFLICT-FREE MINERALS.
- SOLDERABILITY BOARD WITH TEST RESULTS.
- OUTGOING INSPECTION REPORT (BASED ON ACTUAL MEASUREMENTS AND CROSS SECTION).
- VACUUM PACKED WITH DESICCANT.
- FULL PANEL WITH NO REJECT.

<p>UNLESS OTHERWISE SPECIFIED DIMENSIONS ARE IN INCHES</p> <p>TOLERANCES: 0.XX" = ±0.01" 0.XXX" = ±0.005"</p> <p>INTERPRET DIM AND TOL PER ASME Y14.5M-1994 THIRD ANGLE PROJECTION</p>	APPROVALS		<p>ANALOG DEVICES POWER BY LINEAR</p> <p>FOR ADI CUSTOMER USE ONLY</p> <p>TITLE: FABRICATION DRAWING MULTIOUTPUT POWER MANAGEMENT SOLUTION WITH 4 BUCK SWITCHING AND 3 LDO LINEAR REGULATORS WITH I²C</p>
	PCB DES	NC	
	APP ENG	WL	
			<p>SIZE IC NO. LT3380 N/A DEMO CIRCUIT 2985A</p>
			<p>REV 03</p>
	SCALE = NONE		SHT 1 OF 1